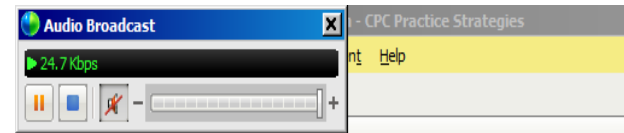


# Thank you for joining us!

- We will start at 3 p.m. EST.
  - You will hear silence until the session begins.
  - Handout: Available at [CBR.CBRPEPPER.org](http://CBR.CBRPEPPER.org).
  - A recording of today's session will be posted at the above location within two weeks.
- Please listen in by either:
    - Using your computer speakers (recommended): You automatically join the audio broadcast when entering the meeting (remember to increase speaker volume; make sure you are not muted).



- Dialing 1-240-454-0887 (passcode 738 042 596) (limited to 500 callers).



# CBR201904 Vitamin D Testing

May 7, 2019, 3 p.m. EST



# About Today's Presentation



Phone lines will be muted the entire duration of the training.



Submit questions pertinent to the webinar using the Q&A panel.



Questions will be answered verbally, as time allows, at the end of the session.

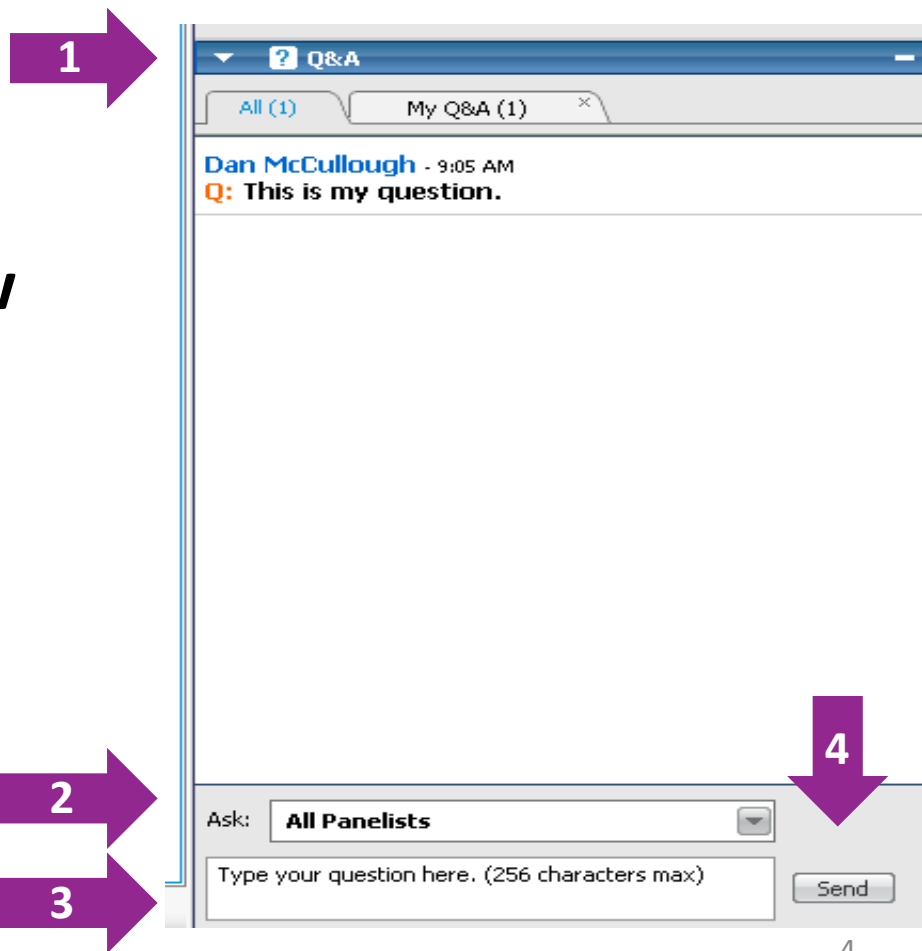


A “Q&A” document will be developed and posted at [CBR.CBRPEPPER.org](http://CBR.CBRPEPPER.org).

# To Ask a Question in Split Screen

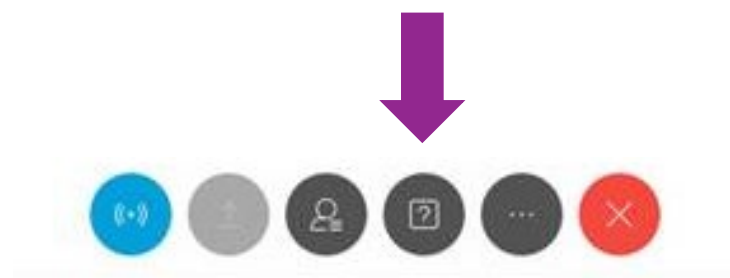
*Ask your question in Q&A as soon as you think of it.*

1. Go to the **“Q&A”** window located on the right side.
2. In the **“Ask”** box, select **“All Panelists.”**
3. Type in your question.
4. Click the **“Send”** button.



## To Ask a Question in Full Screen

1. Click on the “Q&A” button to bring up the Q&A window.
2. Type in your question (as in the previous slide).
3. Click the “**Send**” button.
4. Click “-” to close window to see full screen again.



# Webinar Resources



Webinar Slides



Webinar Recording



Webinar Handout



Webinar Q&A will be posted at  
[CBR.CBRPEPPER.org](https://cbr.cbrpepper.org)



CBR Help Desk:  
<https://cbr.cbrpepper.org/Help-Contact-Us>

## Webinar Objective

- Understand the purpose and use of Comparative Billing Reports (CBR).
- Comprehend the function of the Comparative Billing Report CBR201904: Vitamin D Testing.
- Gather resources for further questions and inquiries.

# Webinar Agenda

- What is a CBR?
- CBR201904
- Review a sample CBR
- How to access your CBR
- Helpful resources
- Questions



# What is a CBR?

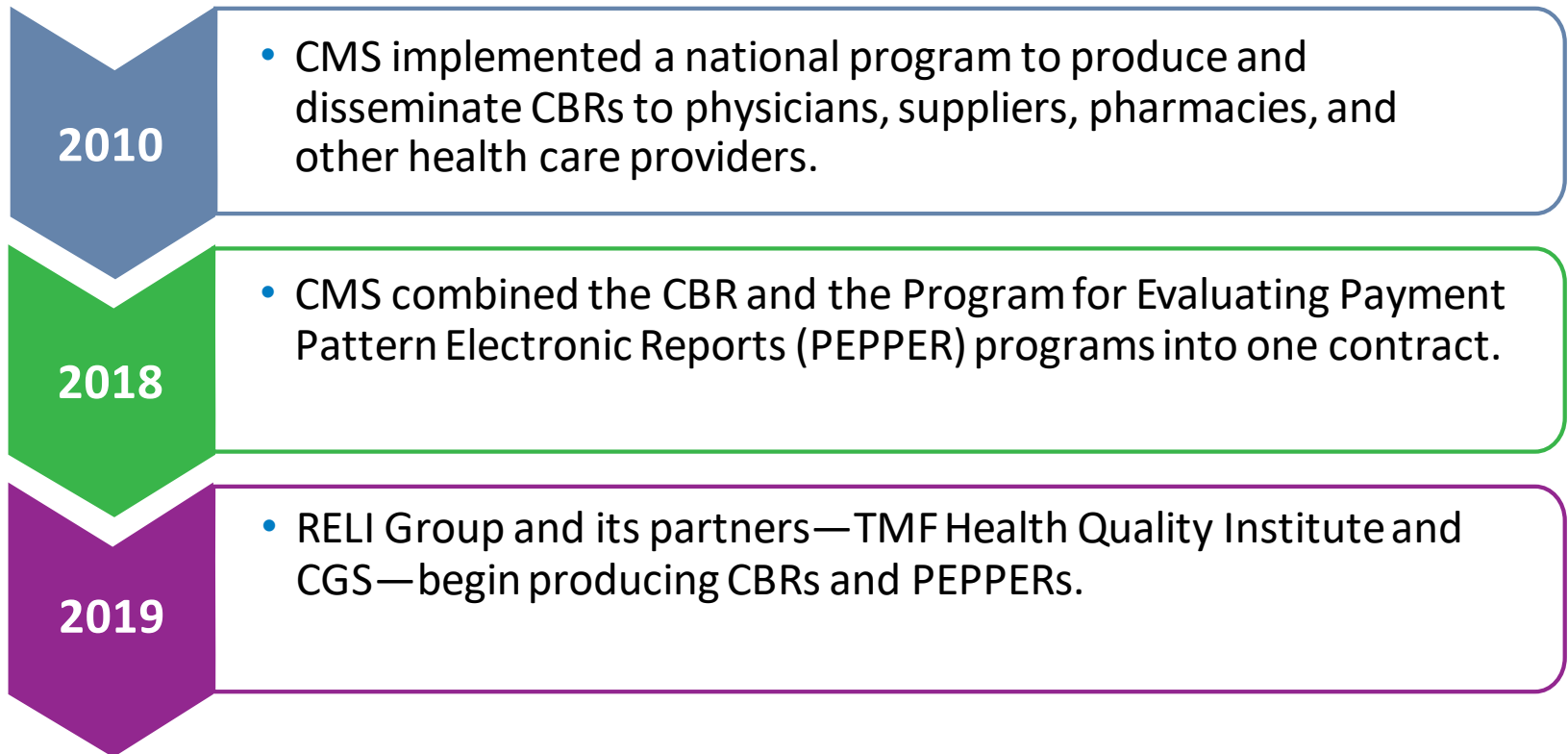
- CBR, as defined by CMS
- History of the National CBR program
- Purpose of CBRs
- Why does CMS issue CBRs?
- CBR formatting

## The CMS Definition of a CBR

- CBRs are free, comparative data reports.
- CMS defines a CBR as an educational resource and a tool for possible improvement.

# History of the National CBR Program

The national CBR program is separate and not related to comparative billing reports that are produced by Medicare Administrative Contractors (MACs) in support of their individual provider education activities.



# Why Does CMS Issue CBRs?

*CBRs provide value to both CMS and Providers*

## Value to CMS

- Supports the integrity of claims submission
- Summarizes claims data
- Provides an educational resource for possible improvement by providing coding guidelines information

## Value to Providers

- Reflects providers' billing patterns as compared to their peers
- Provides specific coding guidelines and billing information
- Informs providers whose billing patterns differ from those of their peers

# CBR Formatting

## 1. Introduction

- Explanation of billing area and description of findings of the CBR

## 2. Coverage and Documentation Overview

- Identification of claims data and CPT® code information

## 3. Basic Coding Guidelines

- Itemization of CPT® codes and details of billing processes

## 4. Metrics

- Explanation of the data and analysis used for the CBR
- Detailed list of CPT® codes and the effect that the billing guidelines have on the CBR results

## 5. Methods and Results

- Overall analysis results and individualized results comparing CBR recipients to other providers

## 6. References and Resources

- Resources used for the CBR

# Vitamin D Testing

- Vitamin D Testing submitted by Referring Providers and in relation to Office Visits



## CBR201904 CBR Focus

- Providers who ordered Vitamin D Testing for which a Medicare Part B claim was then submitted and paid
  - Vitamin D Testing is submitted with CPT<sup>®</sup> code 82306
- Evaluation and Management visits for New and Established Patients for these identified providers
  - New Patient Visits CPT<sup>®</sup> codes 99201–99205
  - Established Patient Visits CPT<sup>®</sup> codes 99211–99215

## CBR201904 CBR Provider Focus

- The CBR team identified clinical specialties for inclusion in the CBR analysis
- Claims were submitted during the time period between Nov. 1, 2017, and Oct. 31, 2018



# CBR201904 CBR Provider Focus, Continued

- The “Top Specialties” are as follows:
  - Internal Medicine (11)
  - Family Practice (08)
  - Nurse Practitioner (50)
  - Physician Assistant (97)
  - Rheumatology (66)
  - Endocrinology (46)
  - Hematology/Oncology (83)
  - Geriatric Medicine (38)
  - Cardiology (6)

## CBR201904 CBR Diagnoses Focus

- Vitamin D Testing is appropriate when submitted for patients with specific diagnoses.
- These diagnoses were therefore excluded from this analysis.
- Excluded diagnoses are as follows:
  - E55.9-Vitamin D deficiency, unspecified
  - M81.0-Age-related osteoporosis without current pathological fracture
  - M85.50-Aneurysmal bone cyst, unspecified site
  - N18.3-Chronic kidney disease, stage 3 (moderate)
  - Z79.899-Other long term (current) drug therapy

# Vitamin D Testing

## **2018 Medicare Fee-for-Service Supplemental Improper Payment Data Report:**

- Lab Tests are in the Top 20 Service Types with the highest improper payments for Part B Claims, estimated at 29.8 percent of payments for Lab Tests, representing \$981 million

## **2017 OIG Report**

- Vitamin D was among Top 5 billed laboratory tests, which had payments of \$2.2 billion in 2017

## CBR201904



Summarizes statistics for services with dates of service from Nov. 1, 2017, through Oct. 31, 2018



217,307 referring providers in the Top Specialties had allowed charges for CPT® codes 82306, 99201–99205, 99211–99215

## CBR201904 Analysis and Focus

- Analysis of referring providers in the “Top Specialties” who billed CPT<sup>®</sup> codes 82306, 99201–99205, and 99211–99215 on Medicare Part B claims was extracted from the Integrated Data Repository, based on the latest version of claims as of Feb. 28, 2019.

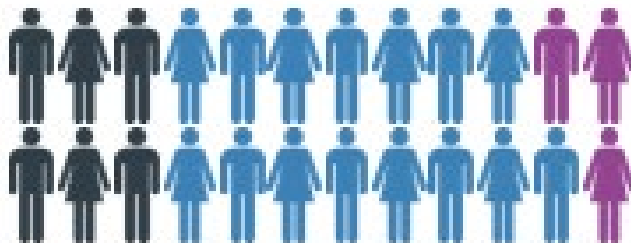
# Why did I receive a CBR?

- A CBR is presented because your billing patterns differ from your peers' patterns based on comparisons on a specialty or nationwide level.
  - Receiving a CBR is not an indication of or precursor to an audit.



# Peer Comparison Outcomes

- There are four possible outcomes for the comparisons between the provider and his/her peer groups:
  - **Significantly Higher** — Provider’s value is above the 95th percentile from the peer specialty or national mean
  - **Higher** — Provider’s value is greater than the peer specialty or national mean
  - **Does Not Exceed** — Provider’s value is not higher than the peer specialty or national mean
  - **N/A** — Provider does not have sufficient data for comparison



# About the 95th Percentile

- Statistics were calculated for each provider, in three metrics, and all providers in the nation. Each provider's values are compared to his/her peer specialty group's values as well as the national values.
- "Significantly Higher" means that a provider's value is above the 95th percentile from the peer specialty or national mean.
- These results look very different from the results of peers on a specialty or national level.





## Why Did I Receive a CBR?

**The criteria for receiving a CBR is that the provider:**

- Has paid claims for office visits and appear as the referring provider for Vitamin D assay claims
- Has at least 10 paid claims for CPT<sup>®</sup> code 82306 with claims submitted for 82306 (excluding diagnoses on the Excluded Diagnoses list)
- Has at least 10 unique beneficiaries with claims submitted for 82306 (excluding diagnoses on the Excluded Diagnoses list)
- Has total allowed charges of \$300 or more

# Review of Sample 0201904 CBR

- Metrics
- Findings
- Methods and Results
- Provider Findings

## Metrics of Sample CBR

This report is an analysis of the following metrics:

1. Ratio of Vitamin D testing to Office Visits
2. Percentage of Beneficiaries with Vitamin D Tests for Other Diagnoses
3. Average Number of Vitamin D Tests per Beneficiaries

# Calculation of Metric 1

- Claim lines with a CPT® code of 82306 service, submitted with a diagnosis code other than the Excluded Diagnoses, were identified as Flagged Claim lines for 82306.
- Claim lines submitted with CPT® codes 99201–99205 and 99211–992015 with a diagnosis code other than the Excluded Diagnoses, were identified as Flagged Office Visits.
- The number of flagged claim lines for 82306 is divided by the total number of flagged New and/or Established Patient Office Visits:

$$\frac{\text{Number of Flagged Claim lines for 82306}}{\text{Number of Flagged Office Visits}}$$

## Calculation of Metric 2

- The number of beneficiaries with CPT® code 82306, submitted with diagnosis other than the Excluded Diagnoses, is divided by the number of total beneficiaries with CPT® code 82306, submitted with all diagnosis codes:

$$\frac{\text{Number of Unique Beneficiaries with 82306 excluding the "Excluded Diagnoses"}}{\text{Total Unique Beneficiaries with CPT® 82306}}$$

## Calculation of Metric 3

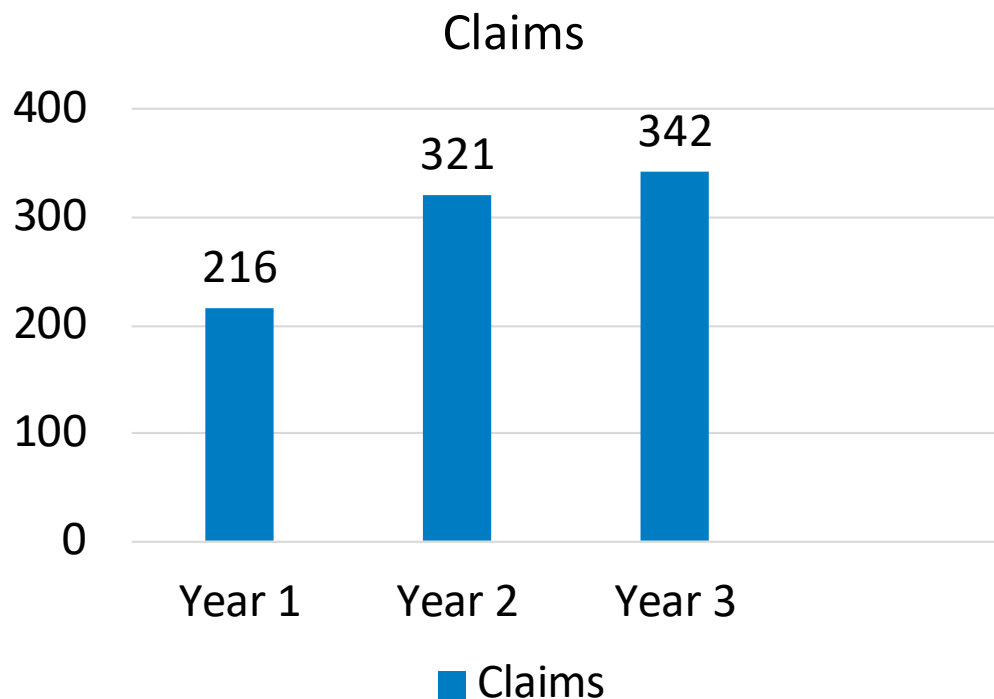
- The number of claims with CPT<sup>®</sup> code 82306 is divided by the number of beneficiaries with submissions for CPT<sup>®</sup> code 82306:

$$\frac{\text{Number of Claims with CPT}^{\text{®}} \text{ code 82306}}{\text{Number of Unique Beneficiaries with CPT}^{\text{®}} \text{ code 82306}}$$

# Provider Trends

- **Trend Over Time Analysis of Total Number of Claims**  
(for CPT® code 82306)

**Figure 1:**



- Year 1 represents claims between Nov. 1, 2015, and Oct. 31, 2016.
- Year 2 represents claims between Nov. 1, 2016, and Oct. 31, 2017.
- Year 3 represents claims between Nov. 1, 2017, and Oct. 31, 2018.

# How to Access Your CBR

<https://cbrfile.cbrpepper.org/>



## CBR Portal

Our Team is committed to ensuring and maintaining the confidentiality of each provider's Comparative Billing Report (CBR). All CBR recipients are expected to maintain and safeguard the confidentiality of privileged data or information.

I certify that I am the  CEO  President  Administrator  Compliance Officer  Owner/Healthcare Provider

and that I have the actual authority to receive this CBR and all other confidential information concerning this health care provider. If a provider does not have a management position with any of these titles, the person who has the authority to make decisions on behalf of the provider should check the box for the title that best describes their position.

### Your Information

First Name  Last Name

Email

Confirm Email

### Provider Information

Provider Name

Provider City  Provider State / Territory

How did you learn about your CBR?

- Received an email notifying me that I had a CBR
- Received a fax notifying me that I had a CBR
- Received a tweet from CMS that prompted me to check for a CBR
- From my national or state provider/professional association
- Received a notice from my Medicare Administrative Contractor (MAC)
- Heard an announcement on a recent CMS Open Door Forum
- OTHER
- None of the above

CMS National Provider Identifier (NPI)

Optional: [Search for an NPI at the NPI Registry.](#)

Validation code

**SUBMIT**



# How to Access Your CBR, Continued

<https://cbrpepper.org/>



## Welcome to CBR PEPPER

Welcome to the new combined website for Comparative Billing Reports (CBRs) and the Program for Evaluating Payment Patterns Electronic Reports (PEPPERS). CBRs and PEPPERS are educational tools made available by the Centers for Medicare & Medicaid Services (CMS) for providers' use in support of their efforts to protect the Medicare Trust Fund.

### About CBR


 Comparative Billing Reports (CBRs) are disseminated to the Medicare provider community to provide insight into Medicare policy and regional billing trends.

[Learn More About CBRs](#)

[Access Your CBR](#)



### About PEPPER

 The Program for Evaluating Payment Patterns Electronic Reports (PEPPERS) summarizes provider-specific Medicare claims data statistics for Medicare Part A discharges and services that have been identified as vulnerable to improper Medicare payments.

[Learn More About PEPPERS](#)

[Access Your PEPPER](#)

## Need Assistance?

**CBRs:** Go to help desk or [1-800-771-4430](tel:1-800-771-4430)

**PEPPERS:** Go to help desk or phone [1-800-771-4430](tel:1-800-771-4430)

This website is developed and maintained by RELI Group, under contract with the Centers for Medicare & Medicaid Services.

For information about the availability of auxiliary aids and services, please visit: <http://www.medicare.gov/about-us/nondiscrimination/nondiscrimination-notice.html>

# Helpful Resources

<https://cbr.cbrpepper.org/Help-Contact-Us>

## CBR Help Desk

Welcome to our support page. View a list of [frequently asked questions](#) or click on the button below to submit your question.

Prior to submitting a request for assistance, to reduce the possibility that email replies from our help desk are blocked due to tightened email security (strong spam filters), please add our email Internet domain @tmf.org to your email Safe Senders List.



**Submit a New Help Desk Request**



**Frequently Asked Questions**

## Helpful Resources, 2

- [2018 Medicare Fee-for-Service Supplemental Improper Payment Data](#)
- [Vitamin D Testing in the General Population: A Review of the Clinical and Cost-Effectiveness and Guidelines](#)
- [Medicare Payments for Clinical Diagnostic Laboratory Tests in 2017: Year 4 of Baseline Data](#)



## Helpful Resources, 3

<https://cbr.cbrpepper.org/home>

- Sample CBR
- Training materials
- Resources and references
- Join our email list
- Provide feedback on CBRs
- Submit a CBR success story

## Welcome to CBR Resources

This is the official site for information, training and support related to Comparative Billing Reports (CBRs).

CBRs are disseminated to the Medicare provider community to provide insight into Medicare policy and regional billing trends. The CBRs that are distributed to the provider community contain an analysis of billing practices across geographic and service areas. Medicare Administrative Contractors (MACs) have been producing and disseminating comparative billing reports to providers in their jurisdiction as part of their provider education efforts for many years. The Centers for Medicare & Medicaid Services (CMS) has formalized and expanded the program to the national level.

A CBR will present the results of statistical analyses that compare an individual provider's billing practices for a specific billing code or policy group with the billing practices of that provider's peer groups and national averages. Each CBR is unique to a single provider and is only available to that individual provider. CBRs are not publicly available.

**Success stories: How your peers have used CBRs.**

[Go to Success Stories](#)

### Upcoming Event: CBR 201904: Vitamin D Testing

**When:** Tuesday, May 7, 2019

3:00 - 4:00 p.m. EDT

**Topic:** This session will review the Comparative Billing Report (CBR) 201904 on Vitamin D Testing, released Apr. 29, 2019.

[REGISTER](#)

### Upcoming Event: CBR 201905 Air Ambulance Transports

**When:** Thursday, May 9, 2019

2:00 - 3:00 p.m. EDT

**Topic:** This session will review the Comparative Billing Report (CBR) 201905 on Air Ambulance, released Apr. 29, 2019.

[REGISTER](#)

#### CBR 201903:

##### Subsequent Hospital Care

- [Sample CBR: Mock Provider Data \(PDF\)](#)
- [Training: \(recording coming soon\) and Handout \(PDF\)](#)
- [National/Specialty Data \(XLSX\)](#)
- [Access Your CBR](#)

#### CBR 201902:

##### Office Visits, New and Established, Family Practitioners

- [Sample CBR: Mock Provider Data \(PDF\)](#)
- [Training: Recording and Handout](#)
- [National/State Data \(XLSX\)](#)
- [Access Your CBR](#)

#### CBR 201901:

##### Intensity-Modulated Radiation Therapy

- [Sample CBR: Mock Provider Data \(PDF\)](#)
- [Training: Recording and Handout](#)
- [National/State Data \(XLSX\)](#)
- [Access Your CBR](#)

# Frequently Asked Questions

<https://cbr.cbrpepper.org/FAQ>

## Frequently Asked Questions

The following questions represent frequently asked questions (FAQs) from the provider community about Comparative Billing Reports (CBRs) and the CBR project in general. FAQs pertaining to a specific CBR release/topic are available with the resources specific to each CBR release/topic.

+	What is a CBR?
+	Why am I getting this report?
+	I have a question about the CBR I received. Who should I contact?
+	Can I get specific claim data related to this report?
+	I have a question about my claims. Who should I contact?
+	I did not receive a CBR. Can I request one?
+	How will I know if I have a CBR available?
+	Is there a sample CBR that I can view?

# Questions?

